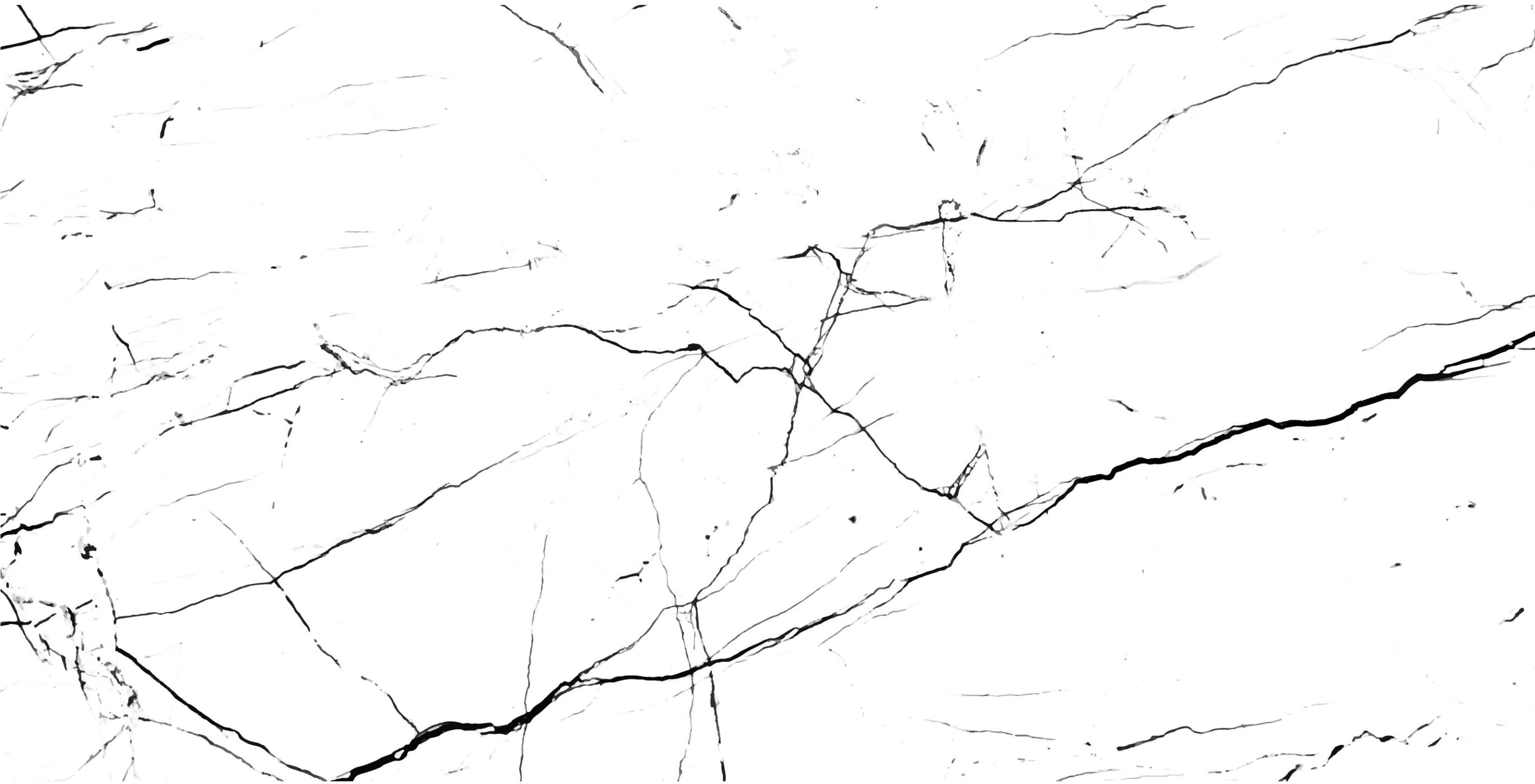


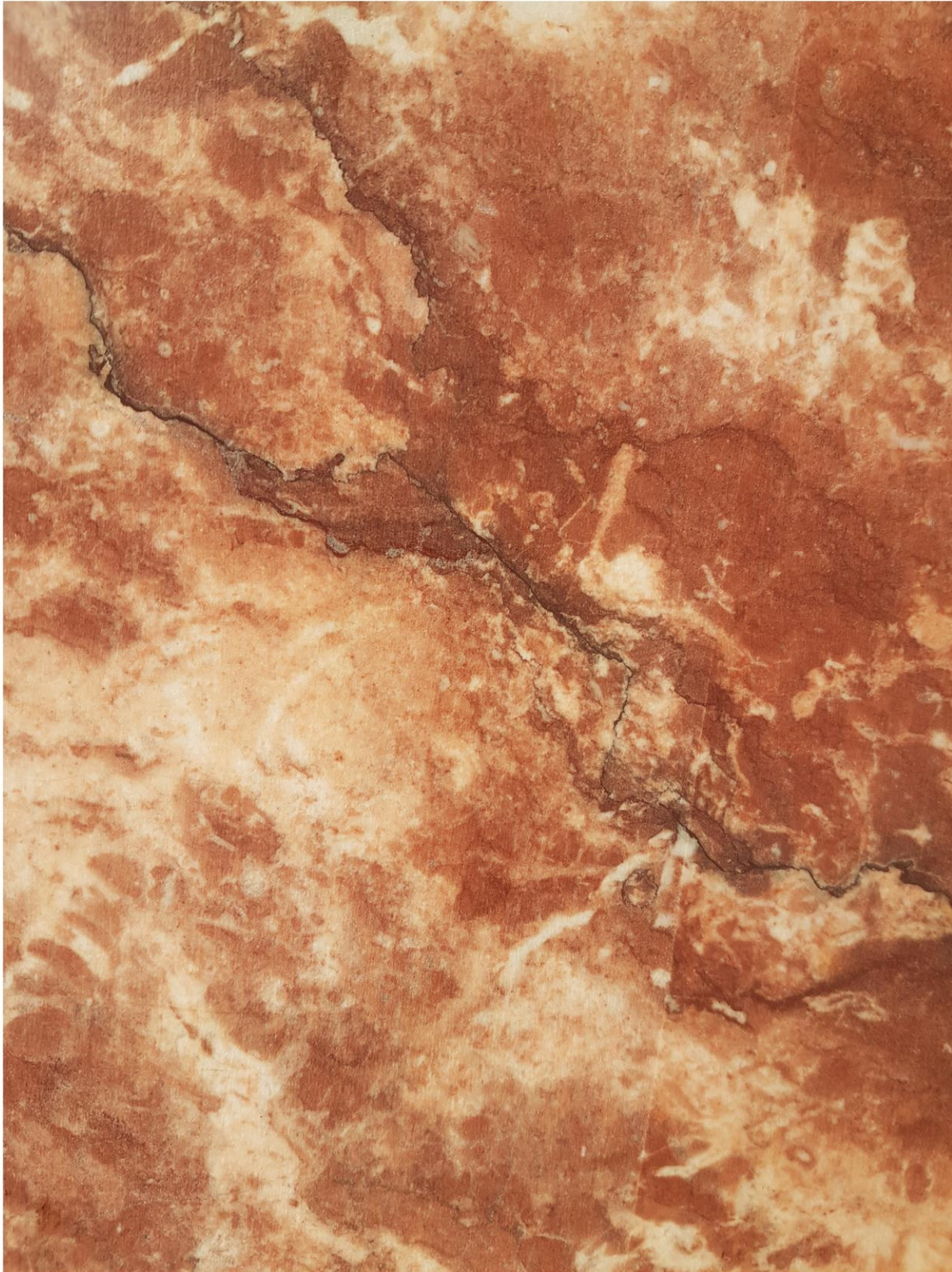
# AFINISHES

BUILDING MATERIALS CRAFTED TO PERFECTION



NATURAL STONE PROFILE





RED CARRERA - NATURAL FINISH

## INTRODUCTION

AFINISHES A BRAND WITH CLIENTELE ALL OVER PAKISTAN, DEALS IN HIGH END NATURAL STONES BOTH IN SLAB AND TILE FORMATS. HAVING TOP OF THE LINE PROCESSING UNIT IN MANGHO PIR, WE IN COLLABORATION HAVE EXPORTED ONE OF THE BEST MARBLES AND GRANITE'S OF PAKISTAN IN FAR REGIONS OF THE WORLD.

SERVING THE LOCAL MARKET, WE HAVE FULL CAPACITY TO SUPPLY TOP OF THE LINE PRODUCTS CATERING TO ALL COMMERCIAL AND RESIDENTIAL NEEDS.

HAVING AN EXCITING RANGE OF BOTH LOCAL AND IMPORTED MARBLES, TRAVERTINES, GRANITES AND STONES, WE HAVE FULL CAPACITY TO PROCURE ANY KIND OF MARBLE, GRANITE AND STONE AS PER THE CLIENT'S REQUIREMENT.

## WHY CHOOSE NATURAL STONE

### NATURAL AND PURE

IN A WORLD WHERE "REAL" IS HIGHLY DIFFICULT TO FIND AND MANMADE SOLUTIONS ARE MORE AND MORE COMMON, NATURAL STONE IS JUST THAT: NATURAL. NO TWO BOULDERS OR BLOCKS, TILES OR SLABS ARE ALIKE, WITH EACH REPRESENTING ITS OWN UNIQUE FORM OF VEINING, STYLE, CRYSTALS AND BACKGROUND. AND IT IS THESE DIVERSE ELEMENTS WHICH ALSO CONTRIBUTE TO ANOTHER INIMITABLE ASPECT OF STONE: ITS EXTRAORDINARY TACTILITY.

### FOREVER

NATURAL MARBLE, GRANITE OR STONE IS ALSO EXTRAORDINARILY DURABLE, STRONG AND LASTS FOREVER. AFTER ALL, THE ANCIENT GREEKS AND ROMANS, WHO KNEW A THING OR TWO ABOUT BEAUTY AND DESIGN, BUILT SOME OF HISTORY'S MOST ENDURING BUILDINGS AND PIECES OF ART USING STONE. SIMPLY LOOK AT THE FLOORS OF ANCIENT CHURCHES AND YOU'LL SEE HOW THE STONE REMAINS BEAUTIFUL AND RELEVANT TODAY DESPITE THE HUNDREDS OF THOUSANDS OF FEET THAT HAVE TRODDEN ON THEM ACROSS THE CENTURIES.

### FLUIDITY IN AESTHETICS

ITS INHERENT STRENGTH AND NATURAL CREDENTIALS MEAN THAT, UNLIKE MOST MASS-PRODUCED TILES, STONE LENDS ITSELF TO A ZERO JOINT, PRESERVING THE FLUIDITY AND AESTHETIC OF THE SURFACE.

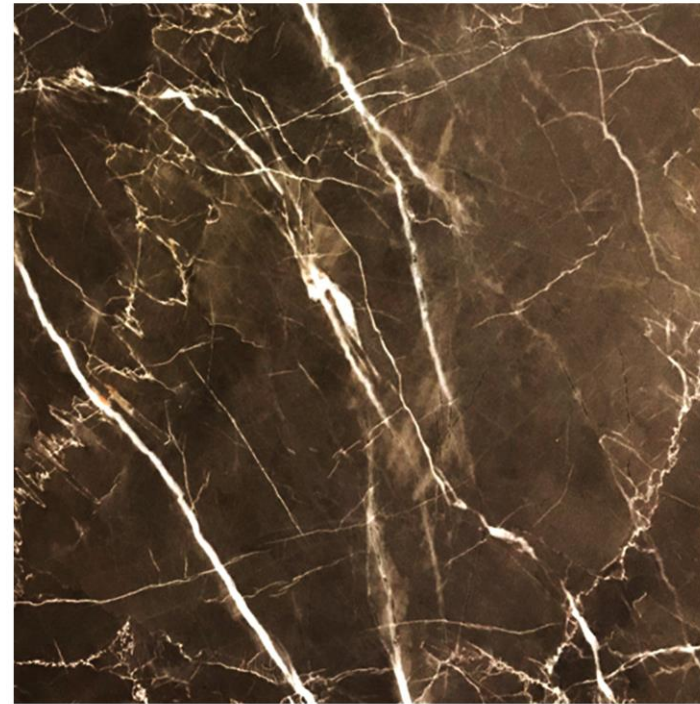


## WHY CHOOSE AFINISHES

WE AT AFINISHES, HAVE WORKED WITH ARCHITECTS, INTERIORS DESIGNERS, DEVELOPERS AND CONTRACTORS FOR MORE THAN 3 YEARS. CLIENTS LIKE THEM REQUIRE EXTREME PRECISION AND ATTENTION TO CREATE THE PERFECT MASTERPIECE. WE HAVE BEEN TRUSTED BY THE BEST IN PAKISTAN.

MASTERING STONE PROCESSING AND BEING KNOWN FOR PROVIDING THE BEST-PROCESSED STONE NATIONALLY AND INTERNATIONALLY. AND HAVING STATE OF THE ART PROCESSING UNIT WE CAN DELIVER THE BEST NATURAL STONES WITHIN DAYS.

EVERY STONE QUARRY, EVEN THE SECTIONS INSIDE A QUARRY, CREATES ITS OWN UNIQUE SET OF CONDITIONS WHICH DICTATES THE COLOR, COMPOSITION, AND QUALITY OF THE STONE CONTAINED WITHIN. GENERALLY SPEAKING, THE BEST MATERIAL IS FOUND IN THE MOST INACCESSIBLE AREAS OF A QUARRY, BUT WE BELIEVE THAT PRODUCT QUALITY STARTS AT THE SOURCE, WHICH IS WHY WE GO TO (SOMETIMES EXTREME) LENGTHS TO FIND THE PERFECT BLOCK. THAT MEANS THAT THE STONE WE USE IS MORE CHEMICALLY STABLE SO IT WON'T DISCOLOR OVER THE YEARS AND WILL BE LESS SUSCEPTIBLE TO EXTERNAL ATMOSPHERIC FACTORS SUCH AS OXIDATION.



COFFEE BROWN - MARBLE



BEIGE TRAVERTINE - TRAVERTINE

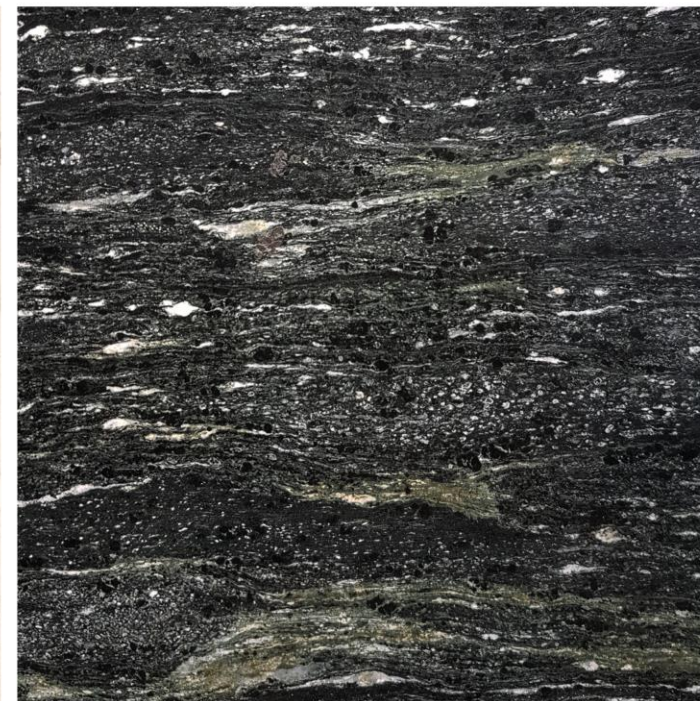
## NATURAL STONE

WE AT AFINISHES HAVE FULL CAPACITY TO SUPPLY THE FOLLOWING STONES BOTH LOCAL AND IMPORTED

- MARBLES
- TRAVERTINE
- GRANITE
- ONYX
- LIME STONES
- BASALT
- QUARTZITE



LIGHT BEIGE - LIME STONE



SEA GRAVEL - GRANITE



GREEN ONYX - ONYX



## MARBLE

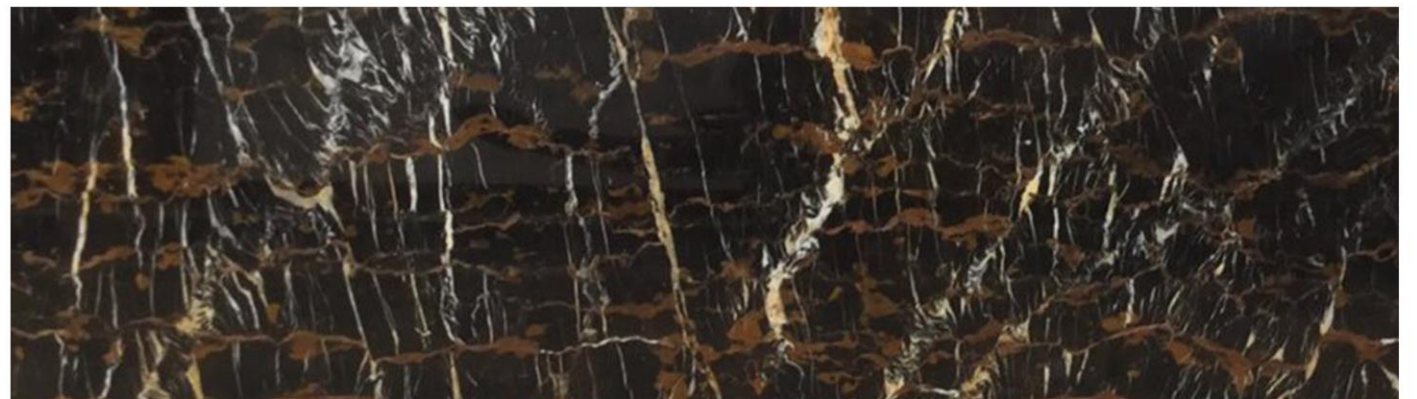
A HARD CRYSTALLINE METAMORPHIC FORM OF LIMESTONE, TYPICALLY WHITE WITH COLORED MOTTLINGS OR STREAKS, WHICH CAN BE POLISHED AND USED IN SCULPTURE AND ARCHITECTURE.

SOME BASIC TYPES OF MARBLE AVAILABLE (NEW DESIGNS CAN BE PROCURED FROM INTERNATIONAL MARKET UPON REQUEST) :

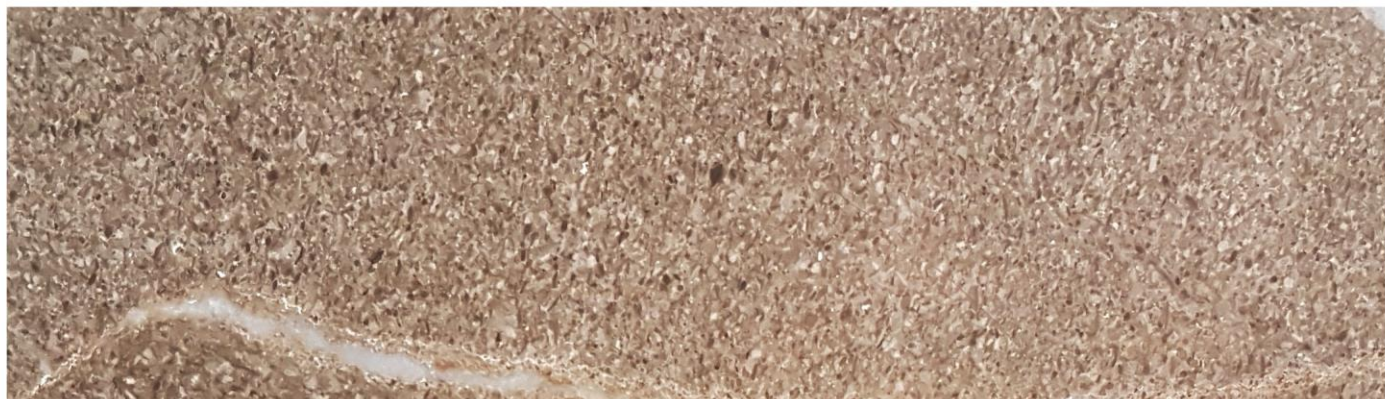
- OCEAN BROWN (DOMESTIC)
- COFFEE BROWN (DOMESTIC)
- BOTICCIONO CREAM (DOMESTIC)
- VERONA (DOMESTIC)
- BLACK AND GOLD (DOMESTIC)
- ZIARAT WHITE (DOMESTIC)
- SUNNY WHITE (DOMESTIC)
- POMPOE A.K.A CRISP GRAY AND WHITE (DOMESTIC)
- RED CARRARA (DOMESTIC)
- LILAC PINK (DOMESTIC)
- LIGHTING WHITE (IMPORTED)
- NIGHT GREY (IMPORTED)
- VOLAKAS (IMPORTED)
- BLUE BERRY (IMPORTED)
- CANE WHITE (IMPORTED)



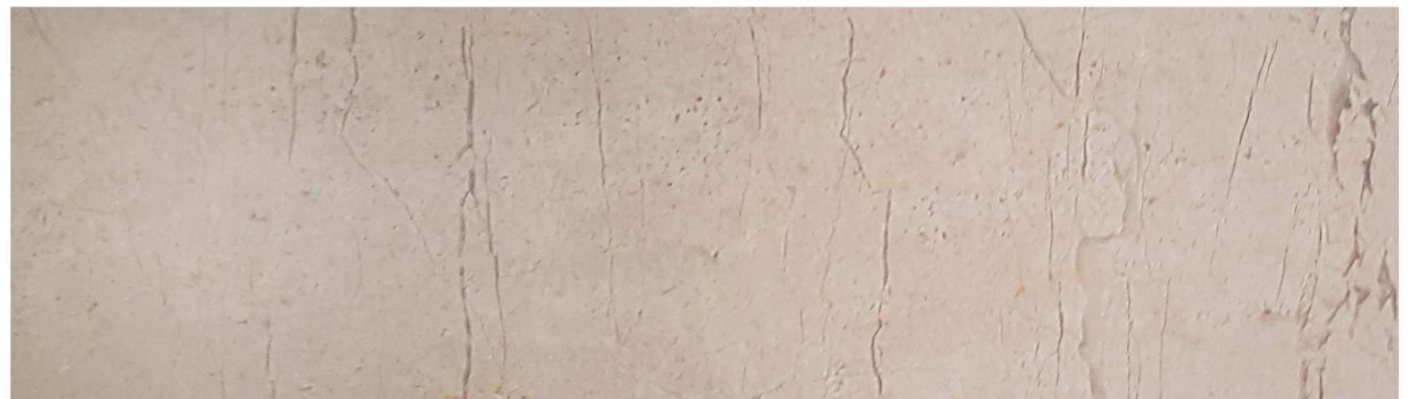
VOLAKAS WHITE - IMPORTED



BLACK AND GOLD - DOMESTIC



OCEAN BROWN - DOMESTIC



VERONA - DOMESTIC



CANE WHITE - IMPORTED



COFFEE BROWN - DOMESTIC



## GRANITE

GRANITE IS AN IGNEOUS ROCK MADE UP OF PRIMARILY QUARTZ, FELDSPAR, MICAS, AMPHIBOLES, AND A MIXTURE OF ADDITIONAL TRACE MINERALS. THESE MINERALS AND THEIR VARIATION IN ABUNDANCE AND ALTERATION GIVE GRANITE THE NUMEROUS COLORS AND TEXTURES.

SOME BASIC TYPES OF GRANITE AVAILABLE (NEW DESIGNS CAN BE PROCURED FROM INTERNATIONAL MARKET UPON REQUEST) :

- STEEL GRAY (DOMESTIC)
- IMPERIAL WHITE (DOMESTIC)
- OLIVE GREEN (DOMESTIC)
- BLACK (DOMESTIC)
- GALAXY (DOMESTIC)
- SEA GRAVEL (IMPORTED)
- SILVER MAGMA (DOMESTIC)
- JUPARANA (IMPORTED)
- CHERRY PINK (IMPORTED)
- NORWAY GRANITE (IMPORTED)



SILVER MAGMA - DOMESTIC



SEA GRAVEL - DOMESTIC



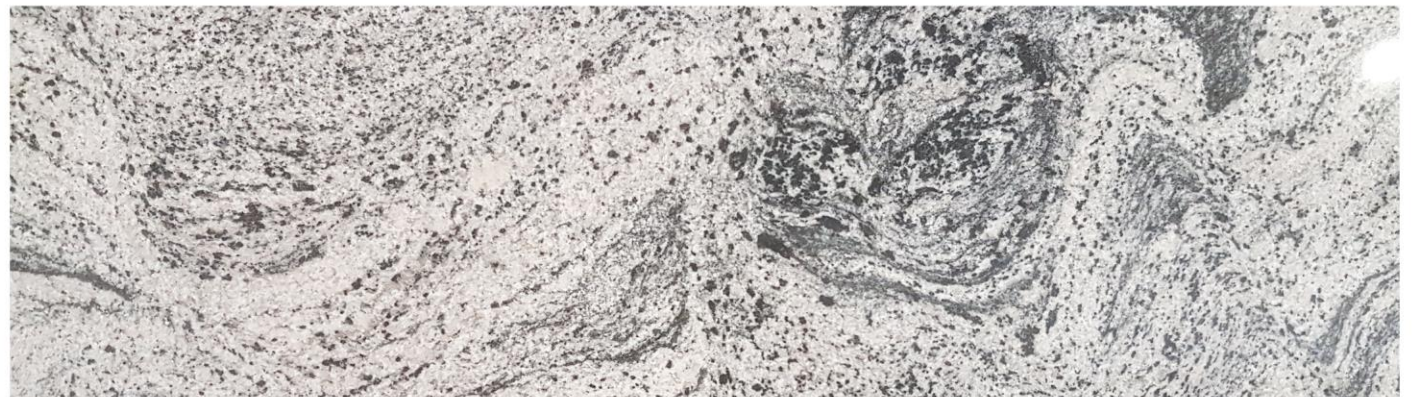
STEEL GREY - DOMESTIC



OLIVE GREEN - DOMESTIC



NORWAY GRANITE - IMPORTED



JUPARANA - IMPORTED



## LIME STONE, SAND STONE AND BASALT

### LIMESTONE

LIME STONE IS A HARD SEDIMENTARY ROCK, COMPOSED MAINLY OF CALCIUM CARBONATE OR DOLOMITE, USED AS BUILDING MATERIAL AND IN THE MAKING OF CEMENT.

### SAND STONE

SANDSTONE IS A SEDIMENTARY ROCK COMPOSED OF SAND-SIZE GRAINS OF MINERAL, ROCK, OR ORGANIC MATERIAL. IT ALSO CONTAINS A CEMENTING MATERIAL THAT BINDS THE SAND GRAINS TOGETHER AND MAY CONTAIN A MATRIX OF SILT- OR CLAY-SIZE PARTICLES THAT OCCUPY THE SPACES BETWEEN THE SAND GRAINS.

### BASALT

BASALT IS A DARK FINE-GRAINED VOLCANIC ROCK THAT SOMETIMES DISPLAYS A COLUMNAR STRUCTURE, TYPICALLY COMPOSED LARGELY OF PLAGIOCLASE WITH PYROXENE AND OLIVINE.



*BASALT - DOMESTIC*



*LIMESTONE - DOMESTIC*



*SANDSTONE - DOMESTIC*



## TRAVERTINE

TRAVERTINE IS A FORM OF LIMESTONE DEPOSITED BY MINERAL SPRINGS, ESPECIALLY HOT SPRINGS. TRAVERTINE OFTEN HAS A FIBROUS OR CONCENTRIC APPEARANCE AND EXISTS IN WHITE, TAN, CREAM-COLORED, AND EVEN RUSTY VARIETIES.

SOME BASIC TYPES OF TRAVERTINE AVAILABLE (NEW DESIGNS CAN BE PROCURED FROM INTERNATIONAL MARKET UPON REQUEST) :

- BEIGE TRAVERTINE (DOMESTIC)
- SILVER TRAVERTINE (DOMESTIC)
- GREY TRAVERTINE (IMPORTED)
- ROMAN TRAVERTINE (IMPORTED)



BEIGE TRAVERTINE - DOMESTIC



ROMAN TRAVERTINE - IMPORTED



GREY TRAVERTINE - IMPORTED



## APPLICATIONS

### MARBLE

MARBLE, DUE TO ITS NATURAL VEIN STRUCTURE CREATES INTRICATE PATTERNS WHICH HAVE ITS OWN BEAUTY. IT CAN BE USED ON FLOORS, STAIRS, WALLS, BATHROOMS, VANITIES, THE SKY IS THE LIMIT. EVERY BLOCK OF MARBLE HAS A DIFFERENT STRUCTURE BUT SOME SLAB CAN BE JOINED TO CREATE A BEAUTIFUL BOOKMATCH PATTERN.

### GRANITE

GRANITE APPLICATIONS ARE VERSATILE AND ADAPTABLE TO HABITABLE SPACES AND TO INTERIOR DECORATION. HAVING A SEAMLESS STRUCTURE, ONE CREATES BEAUTIFUL MONOCHROMATIC PATTERNS. IT CAN BE USED ON FLOORS, WALLS, BATHROOM, VANITIES, EXTERIOR CLADDING, KITCHENS E.T.C.

### TRAVERTINE

HAVING A POROUS SURFACE, ITS USAGE MAINLY CONFINES TO AN EXTERIOR OR INTERIOR CLADDING. ONE CAN USE IT ON THE FLOOR BY FILLING ITS PORES WITH ADHESIVES MAINLY RESIN. ITS BEAUTIFUL LAYERED STRUCTURE GIVES DEPTH TO ANY SPACE IT IS USED IN.



BOOK MATCH MARBLE USED ON WALLS - BARCELONA PAVILION DESIGNED BY MIES VAN DER ROH



GRANITE CLADDING - MET BREUER DESIGNED BY MARCEL BREUER



TRAVERTINE USED ON EXTERIOR CLADDING AND FLOORS - BARCELONA PAVILION DESIGNED BY MIES VAN DER ROH



## FINISHES

### MARBLE

FOLLOWING FINISHES CAN BE ACHIEVED ON MARBLE

- POLISHED
- HONED
- ACID FINISH
- BUSH HAMMERED
- ANTIQUE
- LEATHERED

### GRANITE

FOLLOWING FINISHES CAN BE ACHIEVED ON GRANITE

- POLISHED
- HONED
- FLAMMED
- ACID WASH
- LEATHERED

### TRAVERTINE

FOLLOWING FINISHES CAN BE ACHIEVED ON TRAVERTINE

- POLISHED
- HONED
- BUSH HAMMERED



POLISHED FINISH



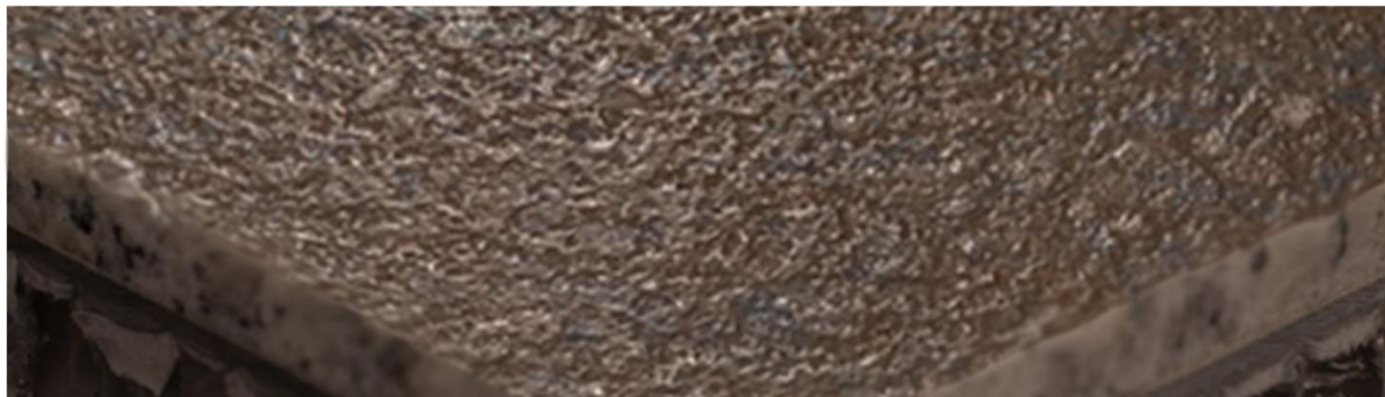
HONED FINISH



BUSH HAMMERED FINISH



FLAMED FINISH



LEATHERED FINISH



ACID WASH FINISH